

Operations Manual

HIGH LIFT PALLET TRUCK

HLS1000N / 1500N



CAPACITY: 1000/1500 KGS

Note: Owner/Operator must read and understand this instruction manual before operating the truck.

Specifications

Model	HLS1000N		HLS1500N	
Rated capacity	1000 kgs		1500 kgs	
Lifting height	800 mm		800 mm	
Height of	85 ±2 mm		85 ±2 mm	
Fork length	1150 mm		1150 mm	
Width across	540 / 680 mm		540 / 680 mm	
Steer wheel	Ø180×50mm		Ø180×50mm	
Front load roller	Ø80×70mm		Ø80×70mm	
Pump times	Quick: 28/Slow: 70		Quick: 28/Slow: 70	
Descending	∠0.1 mm/second		∠0.1 mm/second	
N.W.	128	133k	13	138

NOTE:

Two speeds (quick and slow) can be automatically changed while load is more than 150kgs.

Safety Instructions

1. The truck shall be used in accordance with the instruction manual.
2. Don't put hand & foot underneath the fork at any time.
3. Don't work on a slope surface.
4. Quick lifting is prohibited for load of more than 150kgs. Any manipulation of the pressure relief valve is strictly prohibited. All assembling, adjusting and maintenance shall only be performed by qualified people.
5. Load should be put on the fork center. Side-load is strictly prohibited.
6. The truck shall not be used to transport persons.
7. It is recommended for the driver to wear security shoes.
8. No modifications shall be carried out which adversely affect the compliance of the truck with prEN 1757-4.

Installation & Adjustment

1. Screw (Part No.45)

- To prevent oil-leaking from oil tank during transportation, Air Screw (Part No.45) is replaced by Oil-sealing Screw in factory. But it has to be replaced back when you put this truck into use.
- How to change: Take off Oil-sealing Screw, then screw Air Screw in, thus keep oil tank always connecting with atmosphere.

2.Handle

During transportation, the handle is disassembled from the truck and packed separately. It has to be assembled back and adjusted properly and carefully before use.

A. Handle installation

- Take off screw (92) & pin (87).
- Assemble the handle on the Handle Base with 2 pieces of screw (92) & pin (87).
- Press the handle, and take off the hooked plate (121).

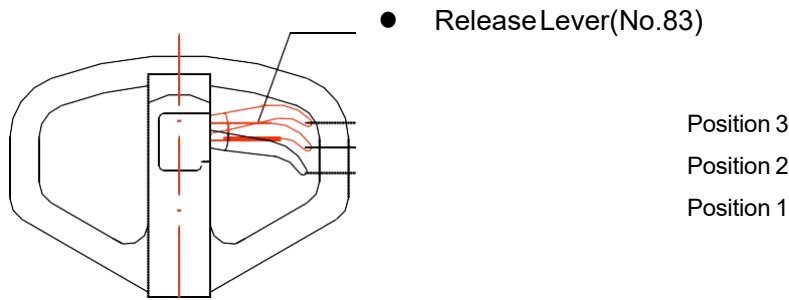
B. Handle adjustment

- There are 3 different positions with different functions for the Release Lever (Part No. 83).

Position 1: Lifting for fork

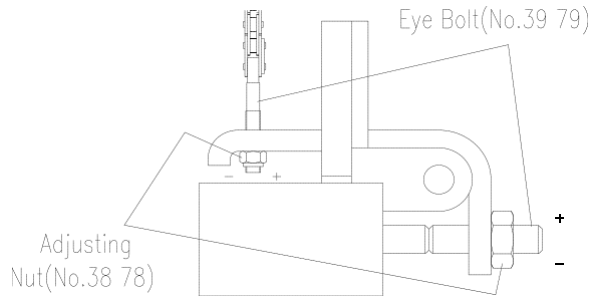
Position 2: Neutral for fork

Position 3: Descending for fork



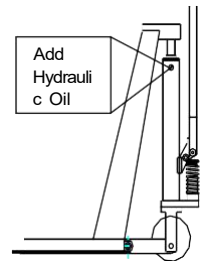
Picture 1

- Test different functions by putting the Release Lever in 3 different positions respectively. If it does not function properly, then adjusting Lock Nut (No.38 79) by following process. See Picture 2.



Picture 2

Problems	Turning direction of Lock
Fork not lifted up	- (clockwise)
Fork not lowering	+ (Counter-Clockwise)



Picture 3

3, How to release the air from the pump: See picture 3

4, When pushing the handle down, the fork can't be lifted instantly. Please loosen the Screw (No.130) on the pump while pushing the handle down slowly to release the air from the pump. Then tighten the screw.

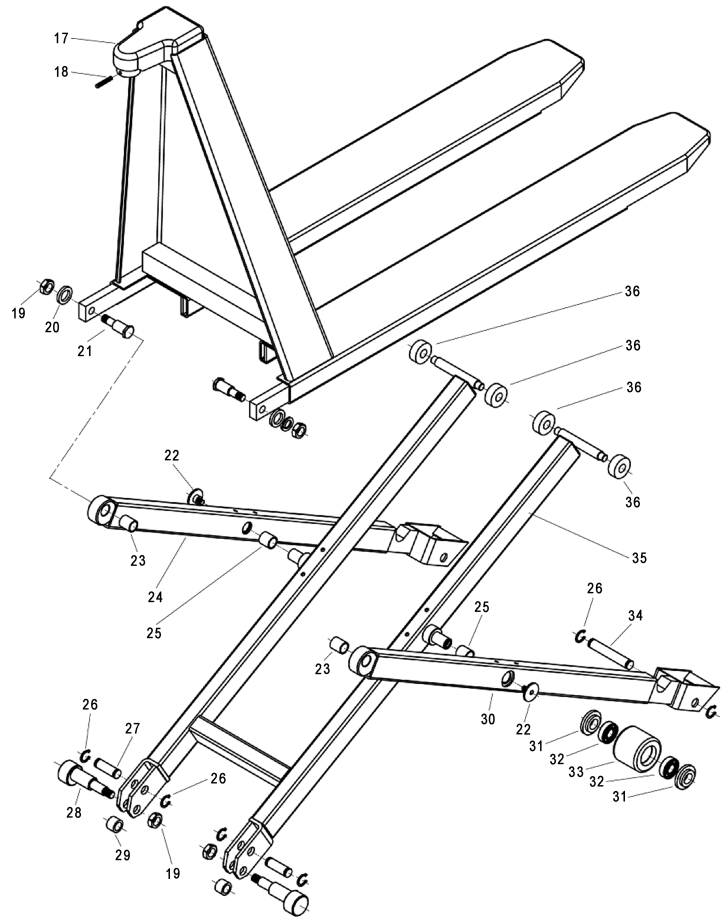
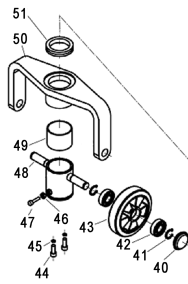
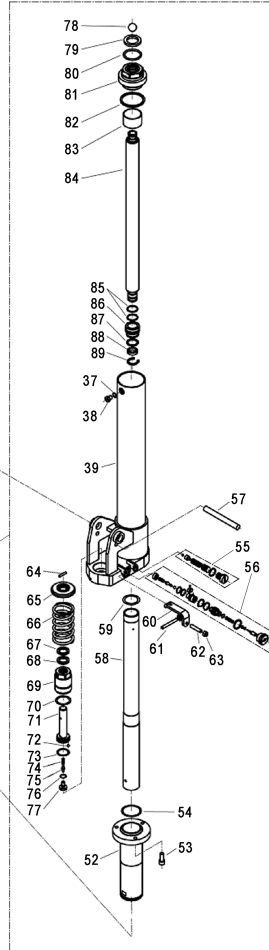
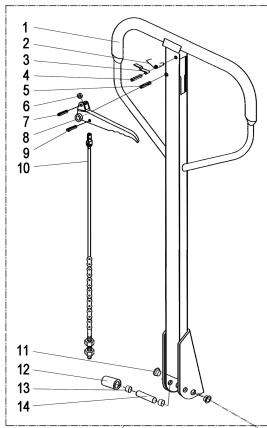
5. When to add oil

If the fork can't be pumped up to its rated highest position, you may have to add hydraulic oil into the oil tank. The hydraulic fluid to be used must have a quality of ISO VG22 or equivalence. Mixing of different fluids is prohibited!

TROUBLE SHOOTING GUIDE

Item	Symptom	Possible cause	Aliments
1	Fork can not be pumped up	1. Low oil level in oil tank. 2. Exist air in the Hydraulic system. 3. Pendulum arm nut is not adjusted properly.	1. Add proper hydraulic oil. 2. Fast operating the handle for several times. Bleed the system. 3. Adjust pendulum arm screw. (See Picture 2)
2	Fork can't be released down	1. Fork blocked. 2. Pendulum arm nut not adjusted properly.	1. Check and remove the block. 2. Adjust pendulum arm nut properly. (See Picture 2)
3	Fork can't be pumped up to rated highest position.	Oil is not enough.	Add hydraulic oil. (See picture 3)

Drawing for Parts details



Parts list

Handle parts							
NO	New P/N	Description	QTY	NO	New P/N	Description	QTY
1	11030101	Handel	1	9	11030109	Spring pin	1
2	11030102	Torsional Spring	1	10	11030110	Rod and chain assy.	1
3	11030103	Blade Spring	1	11	11030111	Bushing	1
4	11030104	Spring pin	1	12	11030112	Press roller	1
5	11030105	Spring pin	1	13	11030113	Bushing	2
6	11030106	Roller	1	14	11030114	Pin	1
7	11030107	Spring pin	1	15	11030115	Handle assy.	1
8	11030108	Release Lever	1				
Chassis parts							
NO	New P/N	Description	QTY	NO	New P/N	Description	QTY
16	11030201	Hydraulic pump assy.	1	34	11030219	Axle	2
17	11030202	Frame 560	1	35	11030220	Scissor project 550	1
	11030202-1	Frame 680	1		11030220-1	Scissor project 680	1
18	11030203	Screw	1	36	11030221	Roller	4
19	11030204	Nut	4	37	11030222	O-ring	2
20	11030205	washer	2	38	11030223	Screw	1
21	11030206	Sleeve	2	39	11030224	Pump Housing	1
22	11030207	Axle	2	40	11030225	Cap	2
23	11030208	Bushing	2	41	11030226	Snap ring	4
24	11030209	Left leg	1	42	11030227	Bearing	4
25	11030210	Bushing	2	43	11030228	Wheel	2
26	11030211	Snap ring	8	44	11030229	Screw	2
27	11030212	Shaft	2	45	11030230	Spring washer	2
28	11030213	Eccentric pin	2	46	11030231	Nut	1
29	11030214	Spacer	2	47	11030232	Screw	1
30	11030215	Right leg	1	48	11030233	Wheel yoke	1
31	11030216	washer	4	49	11030234	Sleeve	1
32	11030217	Bearing	4	50	11030235	Frame	1
33	11030218	Load wheel	2	51	11030236	Bearing	1
Hydraulic pump parts							
NO	New P/N	Description	QTY	NO	New P/N	Description	QTY
52	11030301	Cylinder bush	1	73	11030322	O ring	1
53	11030302	Screw	3	74	11030323	Spring	1
54	11030303	O ring	1	75	11030324	Valve	1
55	11030304	Safety valve assy.	1	76	11030325	O ring	1
56	11030305	Relief valve assy.	1	77	11030326	Screw	1
57	11030306	Pin	1	78	11030327	Steel ball	1
58	11030307	Cylinder	1	79	11030328	Dust ring	1
59	11030308	O ring	1	80	11030329	O ring	1
60	11030309	Spring pin	1	81	11030330	Cylinder nut	1
61	11030310	Rocking beam	1	82	11030331	Seal ring	1
62	11030311	Screw	1	83	11030332	Oil baffle sleeve	1
63	11030312	Nut	1	84	11030333	Piston rod	1
64	11030313	Pin	1	85	11030334	O ring	2
65	11030314	Spring cap	1	86	11030335	Piston	9
66	11030315	Spring	1	87	11030336	O ring	1
67	11030316	Dust ring	1	88	11030337	Y ring	1
68	11030317	Y ring	1	89	11030338	Snap ring	1
69	11030318	Pump	1	90	11030339	Handle Shaft	1
70	11030319	Seal ring	1	91	11030340	Spring pin	1
71	11030320	Plunger	1	***	11030341	Pump seal kits	1
72	11030321	Steel ball	1				