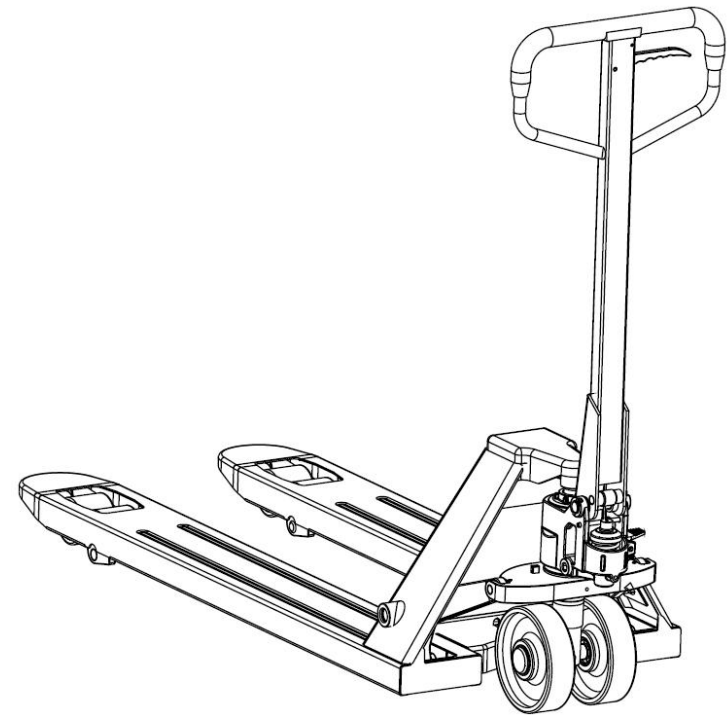


Operate manual & Parts manual

Hand Pallet Truck BF25-H/BF30-H (BF55-H BF66-H)



Note: Owner and operator MUST read and understand this operating instructions before use this pallet truck.

Original Version No.: STX/BF-H/2406


Content

A Operate manual


1 Correct use and application	2
1.1 Safety Regulations.....	2
1.2 Use according to regulations.....	2
1.3 Standard Version Specifications.....	3
2 Handle installation	3
2.1 Precautions.....	4
2.2 Installation steps.....	4
2.3 Handle adjustment.....	5
3 Maintenance	6
3.1 Hydraulic oil.....	6
3.2 Expel air from the pump.....	6
3.3 Daily inspection and maintenance.....	6
3.4 Lubrication.....	6
3.5 Troubleshooting.....	7
B Parts manual	9
1 Chassis parts & Assembly parts.....	9
2 Handle parts.....	13
3 Pump parts.....	15

A Operate manual


1 Correct use and application


 All of the information reported herein is based on data available at the moment of printing; the manufacturer reserves the right to carry out modifications to its own products at any moment, without notice and without incurring in any sanction. It is therefore suggested to always check for possible updates.

1.1 Safety Regulations

 For your safety and correct use of this truck, please read and understand this manual and various warning labels on the vehicle before the first operation.

To ensure assistance at all times, this manual should be easily accessible when needed for reference.

 The discarded outer packaging must be stored in a solid waste bin and recycled by the local environmental protection department. To avoid pollution, it is prohibited to dispose of packaging and other waste at will.

 In order to avoid pollution caused by oil leakage during use, users must prepare dry oil absorbing substances (such as wood chips or dry cloth) to timely absorb oil stains in case of oil leakage.

To avoid secondary pollution, these used oil absorbing substances must be recycled and disposed of by relevant departments in accordance with local laws and regulations.

1.2 Use according to regulations

- It is prohibited to operate the hydraulic transport vehicle before receiving necessary training, being fully familiar with it, and obtaining authorization to operate.
- Before operation, pay attention to checking the condition of the vehicle, especially the wheels, handle components, forks, and push rods.
- Do not use this hand pallet truck on muddy or uneven ground.
- Do not place any part of your body near the mechanical lifting components of this vehicle, on the loaded goods, or under the forks.
- It is prohibited to carry people.
- It is best for operators to wear protective gloves for protection.
- Do not use this vehicle to handle loose or unbound goods.
- Do not overload.
- When handling goods, please pay attention to placing the goods in the center of the fork, and do not place the goods at the tail of the fork.
- Only when the weight of the goods is evenly distributed on the forks can this vehicle be used to its maximum load capacity.
- Please ensure that the fork length is greater than or equal to the length of the pallet.

- When not using this vehicle, please lower the fork to the lowest height.
- In some special circumstances or locations, operators should be cautious and operate with caution.

1.3 Standard Version Specifications

! The technical data provided below are all standard data. Our company reserves the right to make technical changes and supplements.

Model No.		BF25-H (BF55-H)		BF30-H (BF66-H)	
Load capacity	kg (lb)	2500kgs (5500lbs)		3000kgs (6600lbs)	
Pump type		BF			
Wheel type		PU/Nylon/Rubber			
size of steering wheel	ØD mm (in)	180*50 (7.09*1.97)	180*50/200*50 (7.09*1.97/(7.87*1.97))	180*50 (7.09*1.97)	180*50/200*50 (7.09*1.97/(7.87*1.97))
size of Loading wheel (single wheel)	Ød mm (in)	74*93 (2.91*3.66")	80*93 (3.15*3.66")	74*93 (2.91*3.66")	80*93 (3.15*3.66")
size of Loading wheel (double wheel)	Ød mm (in)	74*70 (2.91*2.76")	80*70 (3.15*2.76")	74*70 (2.91*2.76")	80*70 (3.15*2.76")
Lifting height	h mm (in)	120 (4.72")			
Max. fork lifting height	H mm (in)	195 (7.68")	205 (8.07")	195 (7.68")	205 (8.07")
Min. fork lifting height	H1 mm (in)	75 (2.95")	85 (3.35")	75 (2.95")	85 (3.35")
Fork outside distance	W mm (in)	520/550/685 (20.5/21.7/27")			
Fork length	L mm (in)	900/1100/1150/1220 (35.4/43.3/45.3/48")			
Fork width	S mm (in)	160 (6.3")			
Steel thickness (After painting)	mm (in)	3 (0.12")		3.75 (0.15")	
Self-weight	kg (lb)	61.5~68.5kgs (135.6~151lbs)		71~78.5 (156.5~173lbs)	

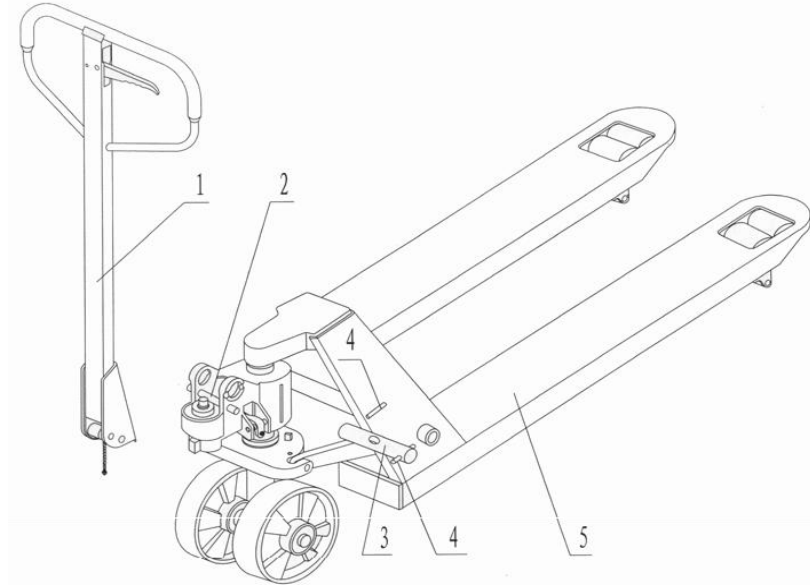
2 Handle installation

➔ If you have purchased a Hand pallet truck packaged with wooden pallets, you need to perform some simple installation before using it. You may need some tools during installation, such as a hammer, pliers, etc; In addition, some accessories are required:

- A perforated shaft,
- 2 spring pins(4) [note: one is already installed on the shaft (3)],

- Booth of the perforated shaft and 1 spring pin are packaged in a plastic bag and wrapped around the handle with tape.

! **Note:** The number on the handle packaging paper and the number on the frame packaging paper must be consistent.



(Fig 1)

1, Handle assy., 2, Locking rod, 3, Handle shaft, 4, Spring pin, 5 Fork frame

2.1 Precautions

➔ When installing the handle, it is best to squat at the rear of the vehicle and follow the following steps for installation.

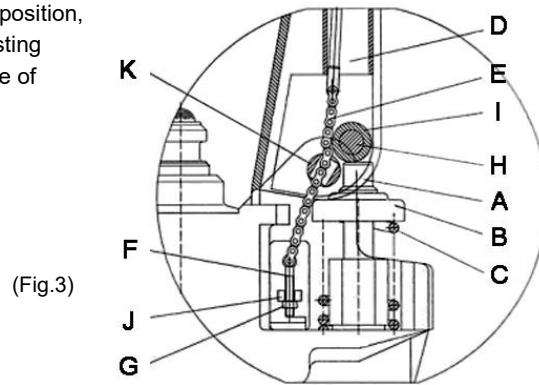
2.2 Installation steps

1, Insert the locking rod(#2) onto the pump piston, then use a hammer to insert the handle shaft with hole(#3) into the hydraulic pump and draw-bar from the right to left. (See fig. #1 and fig #2).



(Fig.2)

2, Let control handle to the 'LOWER' position, then pass the adjusting nut (G), adjusting bolt (F) and chain (E) through the hole of axle(K) with your hand (See fig. 3)



3, Press the draw-bar (D) down, take away the locking rod(#2 in Fig.1).

4, Let the control handle on 'RAISE' position, then raise the lever plate (J) with the locking rod (#2) and insert the adjusting bolt(F) into the front slot of lever plate, note to keep the adjusting nut (G) on the under side of the lever plate(J).

5, Use a hammer to tap another elastic pin into the axle with hole (K). The Draw-bar is now assembled to the pump.

2.3 Handle adjustment

On the draw-bar of this pallet truck, you can find the control handle which can be regulated in three positions :

- Raise handle down
- Drive position handle in center position
- Lower handle up, the lever moves back the drive position when released.

If however they have been changed, you can adjust according to following step:

3.1 If the forks elevate while pumping in the DRIVE position, turn the adjusting nut on the adjusting bolt or adjusting screw clockwise until pumping action does not raise the forks and the DRIVE position functions properly.

3.2 If the forks descend while pumping in the DRIVE position, turn the nut or adjusting screw counter-clockwise until the forks do not lower.

3.3 If the forks do not descent when the control handle is in the LOWER position, turn the nut or adjusting screw clockwise until raising the control handle lowers the forks. Then check the DRIVE position according to item 3.1 and 3.2 to be sure the nut or adjusting screw is in the proper position.

3.4 If the forks do not elevate while pumping in the RAISE position, turn the nut or adjusting screw counter-clockwise until the forks elevate while pumping in the RAISE position. Then check the LOWER and DRIVE position according to item 3.1, 3.2 and 3.3.

3 Maintenance



To ensure the normal use of the machine, please follow the maintenance instructions below for machine maintenance.

3.1 Hydraulic oil



Please check the oil level every six months. The oil capacity is about 0.3ft. Use the hydraulic type oil according to temperature scale below.

Temperature	Oil type
-20°C~+40°C	L-HV46 Hydraulic oil

3.2 Expel air from the pump

The air may come into the hydraulic oil because of transportation or pump in upset position. It can cause that the forks do not elevate while pumping in the RAISE position. The air can be banished in the following way: let the control handle on the LOWER position, then move the handle up and down for several times.

3.3 Daily inspection and maintenance

Daily check of the pallet truck can limit wear as much as possible. Special attention should be paid to the wheels, the axles, as thread, rags, etc. It may block the wheels. The forks should be unloaded and lowered in the lowest position when the job is over.

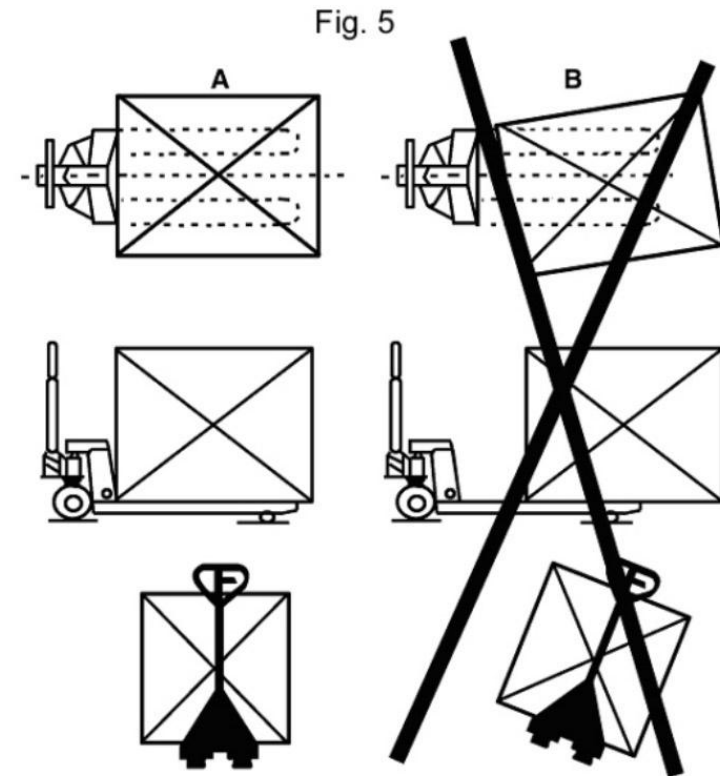
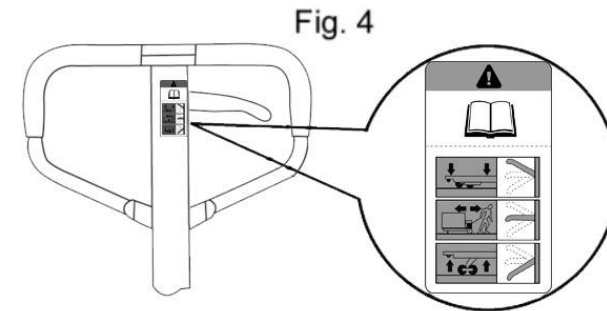
3.4 Lubrication

During production, all bearings and shafts have been coated with durable lubricating oil. You only need to add lubricating oil to the required lubrication areas at monthly intervals or during each thorough cleaning.

3.5 Trouble shooting

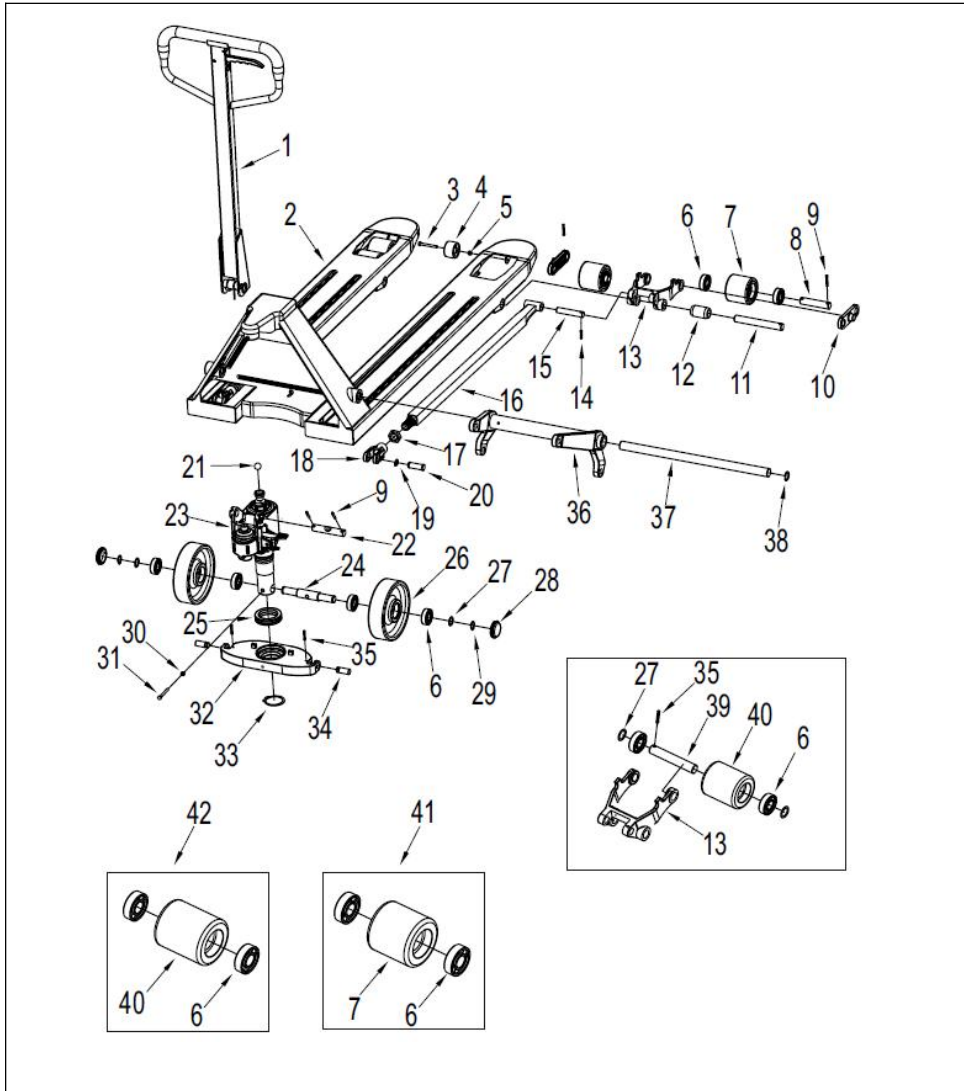
No	Trouble	CAUSE	ACTION
1	The forks can not be up the max. height.	- The hydraulic oil is not enough.	- Pour in the oil.
2	The forks can not be lifted up.	- Without hydraulic oil. - The oil has impurities. - The nut is too high or the screw is too close, keep the pumping valve open. - Air come into the hydraulic oil.	- Fill in the oil. - Change the oil. - Adjust the nut or the screw .(see item 3.4) - Banish the air.(see item 4.2)
3	The forks can not be descended.	- The piston rod or pump body is deformed resulting from partial loading slanting to one side or over-loading. - The fork was kept in the high position for long time with piston rod bared to arise in rusting and jamming of the rod. - The adjusting nut or the screw is not in the correct position.	- Replace the piston rod or pump body. - Keeping the fork in the lowest position if not using, and pay more attention to lubricate the rod. - Adjust the nut or the screw. (see item 3.3)
4	Leaks	- Sealing parts worn or damaged. - Some part cracked or worn into small.	- Replace with the new one. - Replace with the new one.
5	The fork descends without the release valve worked.	- The impurities in the oil cause the release valve to be unable to close tight. - Some parts of hydraulic system is cracked or bored. - Air come into the oil. - Sealing parts worn or damaged. - The adjusting nut or the screw is not in the correct position.	- Replace with new oil. - Inspect and replace the waste parts. - Banish the air. (See item 4.2) - Replace with the new one. - Adjusting the nut or the screw . (See item 3.2)

⚠ NOTE: DO NOT ATTEMPT TO REPAIR THE PALLET TRUCK UNLESS YOU ARE TRAINED AND AUTHORIZED TO DO SO.



B Parts manual

1 Chassis parts & Assembly parts-1



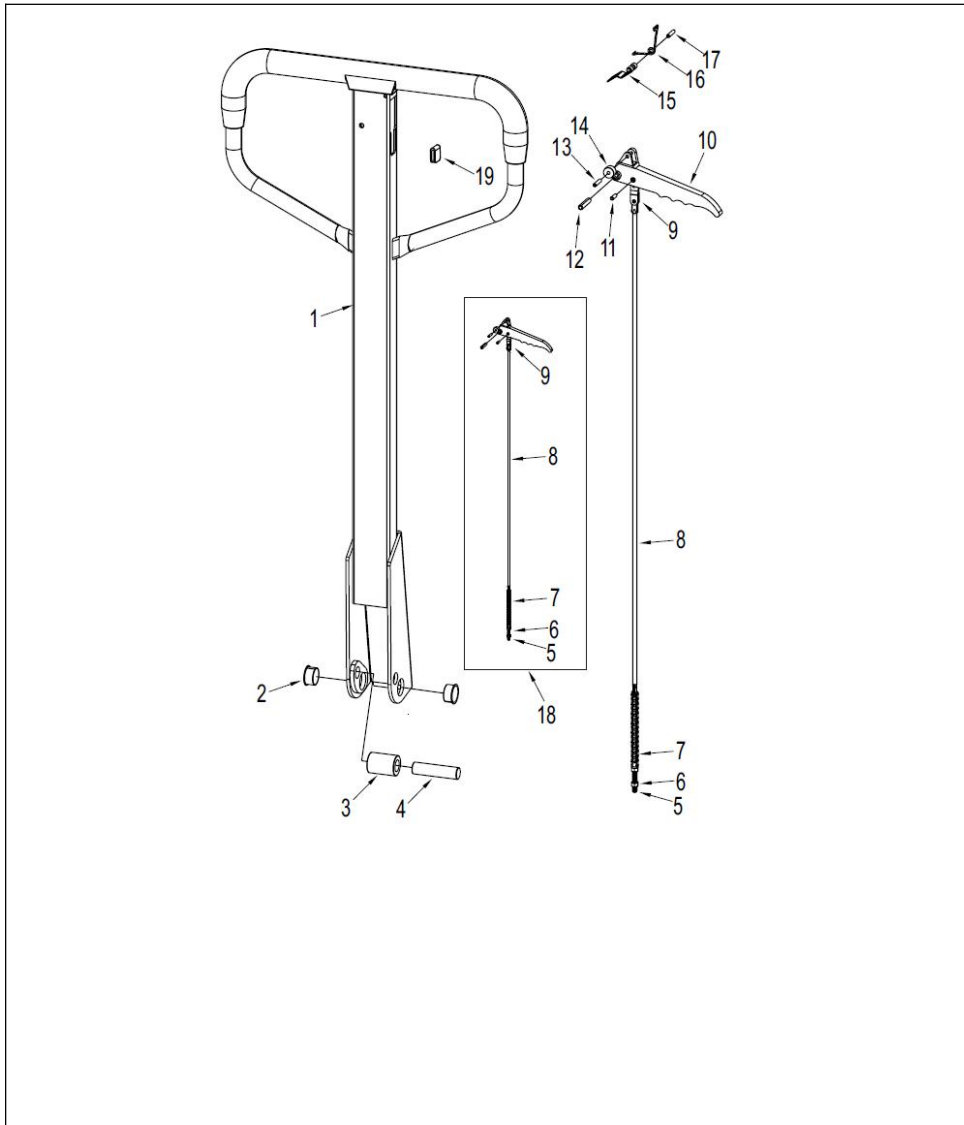
1 Chassis parts & Assembly parts-1

No	Part no.	Description	Specification	QTY
1	32301001	Handle assy(Type1) Standard		1
	32301002	Handle assy(Type2) Option		1
	32301003	Handle assy(Type3) Option		1
2	32301006	Frame 550*1150 2.5T (Min. fork lifting height 85mm)		1
	32301031	Frame 685*1220 2.5T (Min. fork lifting height 85mm)		1
	32301041	Frame 550*1150 3.0T (Min. fork lifting height 85mm)		1
	32301053	Frame 685*1220 3.0T (Min. fork lifting height 85mm)		1
	32301137	Frame 21.7x45.3" 5500 lbs (Min. fork lifting height 75mm)		1
	32301149	Frame 27x48" 5500 lbs (Min. fork lifting height 75mm)		1
	32301159	Frame 21.7*45.3" 6600 lbs (Min. fork lifting height 75mm)		1
	32301171	Frame 27x48" 6600 lbs (Min. fork lifting height 75mm)		1
3	20201604	Screw M6×55	M6×55	2
4	32302045	Front guide wheel		2
5	20402001	Nut	M6	2
6	20501016	Bearing 6204-2RS	6204-2RS	8/12
7	32002010	PU Double loading wheel Ø80*70mm	Ø80*70mm	4
	32002017	Nylon Double loading wheel Ø80*70mm(Bulging)	Ø80*70mm	4
	32002030	Rubber Double loading wheel Ø80*70mm	Ø80*70mm	4
	32002025	PU Double loading wheel Ø74*70mm (Min. fork lifting height 75mm)	Ø74*70mm	4
	32002024	Nylon Double loading wheel Ø74*70mm (Min. fork lifting height 75mm)	Ø74*70mm	4
8	32302040	Axle for double loading wheel (Min. fork lifting height 85mm)		4
	30102269	Axle for double loading wheel (Min. fork lifting height 75mm)		4
9	20901001	Spring pin 5×35	Φ5×35	10
10	32302039	Plate (Min. fork lifting height 85mm)		4
	32302185	Plate (Min. fork lifting height 75mm)		4
11	32302044	Shaft of Wheel fork		2

No	Part no.	Description	Specification	QTY
12	32302073	Shaft sleeve		2
13	32302041	Wheel fork (Min. fork lifting height 85mm)		2
	32302186	Wheel fork (Min. fork lifting height 75mm)		2
14	32302042	Connected shaft		2
15	32301019	Push rod 1150		2
	32301020	Push rod 1220		2
16	20403001	Nut M22*1.5	M22*1.5	2
17	30102059	Joint		2
18	20801001	Snap ring 16	Ø16	2
19	32302038	Connected shaft		2
20	21001008	Steel ball Φ19	Φ19	1
21	32302079	Shaft for handle	20*100	1
22	32301004	BF Oil pump assy for Ø180 steering wheel		1
	32301005	BF Oil pump assy for Ø200 steering wheel		1
23	32302007	Steering wheel shaft		1
24	20503003	Bearing 51111	51111	1
25	32002001	PU Steering wheel Ø180*50	Ø180*50	2
	32002002	PU Steering wheel Ø200*50	Ø200*50	2
	32002004	Nylon Steering wheel Ø180*50	Ø180*50	2
	32002005	Nylon Steering wheel Ø200*50	Ø200*50	2
	32002021	Rubber Steering wheel Ø180*50	Ø180*50	2
	32002022	Rubber Steering wheel Ø200*50	Ø200*50	2
26	32302046	Gasket		2
27	32302050	Dust cover		2
28	20801003	Snap ring 20	Ø20	2
29	20402007	Nut M8	M8	1
30	20101824	Screw M8×60	M8×60	1
31	32302001	Connecting frame		1

No	Part no.	Description	Specification	QTY
32	20801014	Snap ring 55	Ø55	1
33	32302002	Axle		2
34	20901003	Spring pin 5×30	Ø5×30	2
35	32301017	Rocker arm 550 (2.5T & 3.0T)		1
	32301018	Rocker arm 685 (2.5T)		1
	32301063	Rocker arm 685 (3.0T)		1
36	32302036	Long axis 550		1
	32302037	Long axis 685		1
37	20802002	Snap ring 25	Ø25	2
38	30102275	Axle for single loading wheel (Min. fork lifting height 85mm)		2
	32302205	Axle for single loading wheel (Min. fork lifting height 75mm)		2
39	32002007	PU Single loading wheel Ø80*93mm (Min. fork lifting height 85mm)	Ø80*93mm	2
	32002029	Nylon Single loading wheel Ø80*93mm (Min. fork lifting height 85mm)	Ø80*93mm	2
	32002008	PU Single loading wheel Ø74*93mm (Min. fork lifting height 75mm)	Ø74*93mm	2
	32002015	Nylon Single loading wheel Ø74*93mm (Min. fork lifting height 75mm)	Ø74*93mm	2
40	32001010	PU Double loading wheel Ø80*70mm with bearing		4
	32001017	Nylon Double loading wheel Ø80*70mm with bearing		4
	32001030	Rubber Double loading wheel Ø80*70mm with bearing		4
	32001025	PU Double loading wheel Ø74*70mm with bearing (Min. fork lifting height 75mm)		4
	32001024	Nylon Double loading wheel Ø74*70mm with bearing (Min. fork lifting height 75mm)		4
	32001007	PU Single loading wheel Ø80*93mm with bearing		2
41	32001013	Nylon Single loading wheel Ø80*93mm with bearing		2
	32001008	PU Single loading wheel Ø74*93mm with bearing (Min. fork lifting height 75mm)		2
	32001015	Nylon Single loading wheel Ø74*93mm with bearing (Min. fork lifting height 75mm)		2

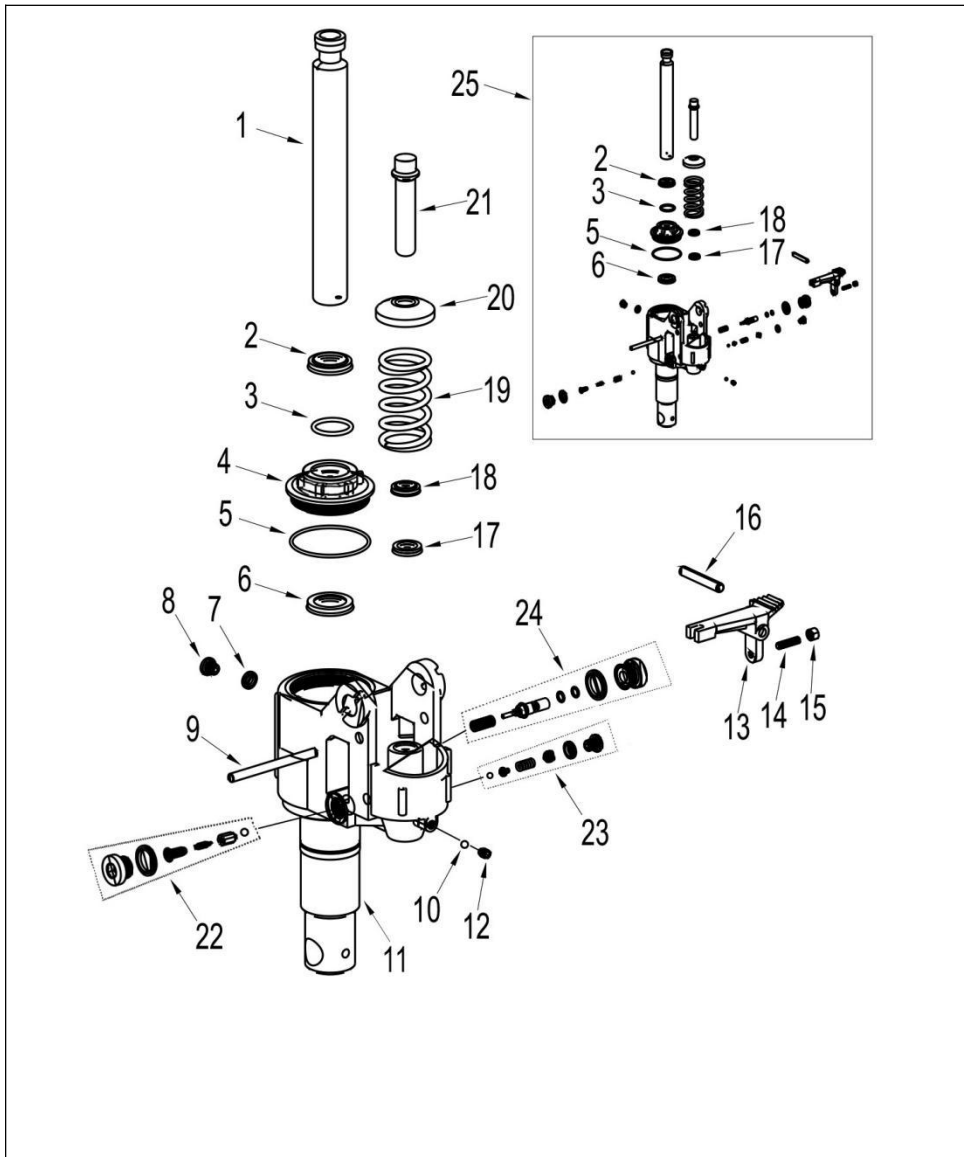
2 Handle parts



2 Handle parts

No	Part no.	Description	QTY/ Truck
1	32301106	Handle tube	1
2	32302114	Self lubricating bearing	2
3	32302115	Pinch roller	1
4	32302116	Roller shaft	1
5	20402004	Nut	1
6	32302117	Adjustable bolt	1
7	32302118	Chain	1
8	32302119	Pull rod	1
9	32302120	Connecting plate of pull rod	1
10	32302121	Control Handle	1
11	32302122	Spring Pin Ø4x13	1
12	20901006	Spring Pin Ø6x30	1
13	20901010	Spring Pin Ø4x20	2
14	32302123	Pulley	1
15	32302124	Blade Spring	1
16	32302125	Torsional Spring	1
17	20901005	Spring Pin Ø4x30	2
18	32301111	Release rod & chain assy.	1
19	32302126	Rubber pad	1

3 Pump parts



3 Pump parts

No	Part no.	Description	QTY/ Truck
1	32302080	Plunger Ø31.5*263	1
2	32302081	Dust ring Ø31.5	1
3	32302082	O-ring Ø31.5*3.55	1
4	32302083	Guide sleeve D31.5	1
5	32302084	O-ring Ø69*2.65	1
6	32302085	Seal washer Ø31.5	1
7	32302086	Compound gasket 10	1
8	32302087	Screw M10×1	1
9	32302088	Locking rod 8*100	1
10	32302089	Steel ball Φ6.35	1
11	32302095	Pump body	1
12	32302096	Screw M8×10	1
13	32302101	Pedal	1
14	32302102	Screw M6×25	1
15	32302103	Nut M6	1
16	32302104	Spring pin	1
17	32302109	Seal washer Ø18*26*5	1
18	32302110	Dust ring Ø18*26*4.5/6	1
19	32302111	Big spring	1
20	32302112	Spring cap	1
21	32302113	Small pump core	1
22	32301107	Check valve assy.	1
23	32301108	Safety valve assy.	1
24	32301109	Release valve assy.	1
25	32301110	Pump seals kit Ø31.5	1